

**OFFICE OF STATE AID
ROAD CONSTRUCTION**



**Annual Report
Fiscal Year 2008**



**OFFICE OF
STATE AID ROAD CONSTRUCTION**

MISSISSIPPI DEPARTMENT OF TRANSPORTATION
P. O. BOX 1850
JACKSON, MISSISSIPPI 39215-1850

*J. Brooks Miller, Sr., P.E.
State Aid Engineer
Tele 601-359-7150
www.osarc.state.ms.us*

*412 Woodrow Wilson Ave.
Jackson, Mississippi 39216
Fax 601-359-7141
mail@osarc.state.ms.us*

January 9, 2009

The Honorable Haley Barbour, Governor, and
Members of the Mississippi Legislature

Gentlemen:

RE: Annual Report, Office of State Aid Road Construction
Fiscal Year July 1, 2007 thru June 30, 2008

The State Aid Engineer respectfully submits this Annual Report of the Operations of the Office of State Aid Road Construction for Fiscal Year 2008.

Included are operation summaries of the past fiscal year, together with a brief summary of the overall background and functions of the office at the state and county levels. We hope that this information will be of interest and help to the Governor and all members of the Legislature, as well as other individuals concerned with the State Aid Road Program.

During Fiscal Year 2008, the counties awarded \$103,383,107 in construction contracts. This was comprised of \$39,225,946 for State Aid (SAP) projects, \$49,264,367 for Federal Aid projects [which included \$3,690,000 for three (3) Bridge Replacement (BR) projects], \$12,809,894 for Local System Bridge Program (LSBP) projects and \$2,082,900 for Local System Road Program (LSRP) projects.

Through its improved system of roads, the State Aid Program continues to contribute to the construction and maintenance of roads and bridges in all counties of the state. Many employment opportunities are provided during the actual construction of State Aid roads.

We encourage the Legislature to conduct a thorough study of the State Aid Program so that any legislative changes made will strengthen the program and serve the long-term interests of the citizens of Mississippi.

Your recommendations and support of the State Aid Program are respectfully requested.

Respectfully submitted,

J. Brooks Miller, Sr.
State Aid Engineer

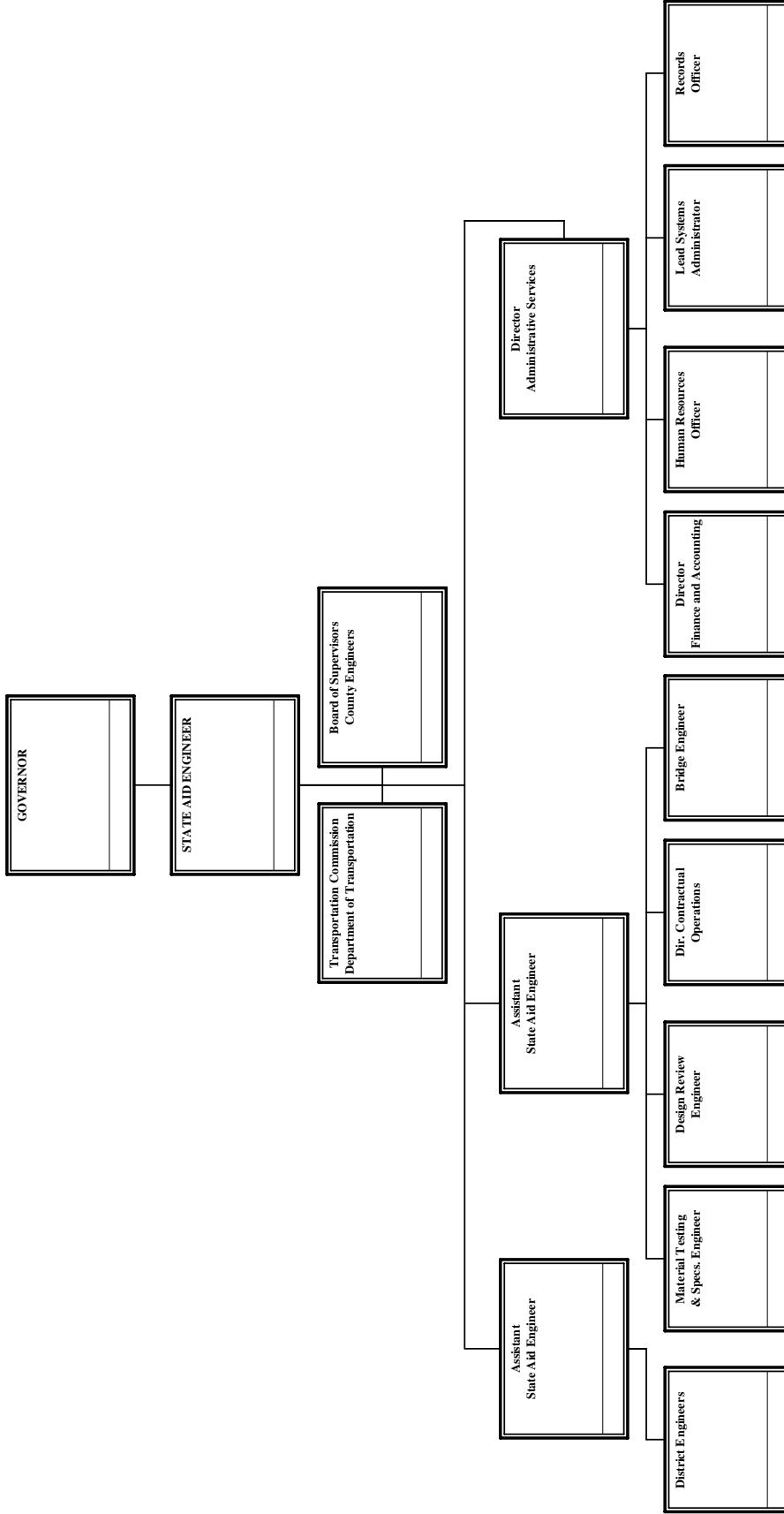
OFFICE OF STATE AID ROAD CONSTRUCTION
SUMMARY ANNUAL REPORT
FOR
THE FISCAL YEAR JULY 1, 2007 TO JUNE 30, 2008
TOGETHER WITH
A PROGRESS REPORT FROM THE BEGINNING OF THE
PROGRAM (MAY, 1950) TO JUNE 30, 2008

TABLE OF CONTENTS

	<u>Page</u>
Organizational Chart	1
State Aid Road Program:	
Background of Program	2
Organization of Program	3
Operation of Program	4
Type or Character of Construction and Reseal Programs	5
Progress of Program	6
Revenue Sources and Amounts	11
Receipts and Disbursements	12
Funding Summary	13
Summary of Administrative Expenses	14
Out-of-State Travel to Conventions and Meetings	16
Automobile Expenditures for State-Owned Vehicles	17
Improvements Let to Contract from July 1, 2007 thru June 30, 2008	18
Improvements Made on State Aid System from June, 1950, thru June 30, 2008	20
State Aid Program Construction and Engineering Disbursements from July 1, 2007 thru June 30, 2008	23
Local System Bridge Program Construction and Engineering Disbursements from July 1, 2007, thru June 30, 2008	26

**OFFICE OF STATE AID ROAD CONSTRUCTION
ORGANIZATION CHART**

Fiscal Year 2008
Annual Report



THE STATE AID ROAD PROGRAM

This report primarily summarizes the operations and progress of the State Aid Program for the fiscal year July 1, 2007 to June 30, 2008.

It is considered appropriate, however, to include an overall background of the program covering the enabling legislation, organization and functions at the State Aid Office and county levels, total funds expended, and total construction improvements accomplished.

An estimate of the program volume anticipated for the fiscal year July 1, 2008 to June 30, 2009 is also included in the report.

BACKGROUND OF PROGRAM

The State Aid Program had its beginning with the passage of Chapter 6, Laws of the Extraordinary Session of 1949 (Section 65-9-[1-33] of the Mississippi Code of 1972). This legislation provided for the creation of a division within the State Highway Department, to be known as the Division of State Aid Road Construction, and to be charged with the responsibility of administering the program at the state level. The 1992 Legislature passed Senate Bill 2763 which created the Mississippi Department of Transportation. Under this bill the State Highway Department became known as the Department of Transportation and the Division of State Aid Road Construction became known as the Office of State Aid Road Construction.

The Enabling Act also provided for a State Aid System, to be composed of the principal collector and distributor routes in the 82 counties, connecting with the State Highway System and other principal county roads to form a network of secondary roads for the state. This system was originally limited to 11,656.4 miles, with each county allocated a percentage of this eligible mileage. The State Legislature at its 1962 Regular Session increased the eligible system mileage to 23,312.8 miles. No change was made in the allocation percentages. In 1994 under House Bill 1302 the allocation percentages were revised and the eligible mileage was increased to 25,857.04 miles. There are 19,018.85 miles actually designated by the Boards and approved by the State Aid Engineer as of June 30, 2008.

The 1994 Regular Session of the Legislature passed House Bill 1302 which included the establishment of a Local System Bridge Replacement and Rehabilitation Program (LSBP), (Section 65-37[1-15] of the Mississippi Code of 1972). The program provides funding for replacement and rehabilitation of deficient bridges maintained by counties or municipalities excluding bridges on the State Aid System, the municipal urban system or the rural major collector system. The Office of State Aid Road Construction is charged with the responsibility of administering the LSBP program under rules and regulations promulgated by the State Aid Engineer.

The 2001 Regular Session of the Legislature passed Senate Bill No. 2318 which established the Local System Road Program (LSRP), (Section 65-18[1-17] of the Mississippi Code of 1972). The program gives the counties the ability to use LSBP and State Aid funds

(subject to certain criteria) for the construction, reconstruction and paving of county roads not on the State Aid Road System.

ORGANIZATION OF PROGRAM

Organization of the State Aid Office

The State Aid Enabling Act provides that the Office of State Aid Road Construction be directed by a State Aid Engineer, who is appointed by the Governor for terms of four years each (as amended by the Legislature in 1985). It further provides that the State Aid Engineer hire assistant engineers and other employees necessary to carry out the duties and responsibilities set out in the enabling legislation.

The actual organization of the office began with the appointment of the first State Aid Engineer on May 11, 1950. The office was authorized in 2008 to have an organization for a staff of forty-eight (48) full-time employees, including fifteen (15) Registered Professional Engineers. All positions are approved by the Department of Finance and Administration and the State Personnel Board.

Organization at the County Level

Each Board of Supervisors, as the governing agency of the county, is required by statute to appoint a County Engineer, who is a Registered Professional Engineer, to act for and on behalf of the Board and to administer the engineering functions at the county level, subject to the rules and regulations promulgated by the State Aid Engineer.

The Board is also required to appoint a Local System Bridge Engineer to administer the LSBP program at the county level. The duties of the LSBP Engineer parallel those of the County Engineer and the Board may elect to appoint the County Engineer as the LSBP Engineer.

OPERATION OF THE PROGRAM

Operation of the Program at the County Level

It is the responsibility of the Board of Supervisors to designate the roads to be included in the county's State Aid System; adopt annual construction programs; acquire rights-of-way for State Aid projects; advertise for bids; award contracts; and maintain completed projects after construction.

The County Engineers' responsibilities and duties include, but are not limited to, the following: Assist the Boards of Supervisors in the designation and modification of their State Aid Systems; prepare annual construction programs; make surveys and prepare detailed plans and designs; make field inspections with the State Aid Engineer's representatives; prepare proposals for advertisement for bids; attend lettings at the county level; provide engineering controls (staking, etc.); supervise and inspect construction; prepare estimates for payment to the contractors; and make annual maintenance inspections of completed projects.

Operation of the Program at the State Level

It is the responsibility of the State Aid Engineer and his staff to prepare and adopt uniform design standards and specifications for the construction and maintenance of State Aid projects; approve all additions to the State Aid System; approve all construction programs, plans and specifications; authorize advertisement for bids; concur in the award of the contracts; approve and disburse all payments made from the project fund; approve the final acceptance of completed projects; and make annual and other periodic inspections of completed projects to see that they are properly maintained by the respective Boards of Supervisors.

TYPE OR CHARACTER OF CONSTRUCTION AND RESEAL PROGRAMS

Construction

During the early years of the program (the 1950's), many counties had a great need for bridges and graded roadways with a gravel surface, although many other counties began their State Aid Programs with the construction of hard-surfaced (blacktop) improvements.

It has been the objective throughout the program to construct roads that would connect with the State Highway System and other State Aid routes to form a network of secondary roads. At the present time, all programs now being approved provide for the future completion of a hard-surfaced facility.

The first hard-surfaced State Aid roads, which were completed in the beginning of the program, now need asphalt overlays. It will be noted from the summaries to follow in this report that a total of 3,137.6 miles of hot mix asphalt overlay construction (some surfaces were widened) has been accomplished. This points to the fact that the principal or arterial State Aid roads must now be upgraded to meet increasing traffic volumes and heavier loads. It is anticipated that the need for these betterments on the principal routes will continue to increase.

Maintenance and Reseal Work

The original State Aid Act did not permit the use of State Aid funds for the reseal of existing bituminous surfaces, which work consists of a light application of liquid asphalt and a light application of a fine or seal aggregate to cover the asphalt. Reseal work is regarded as maintenance. The Legislature, during its 1962 Session, amended the law to permit the use of State Aid funds (not to exceed 10%) to reseal hard-surfaced roads which had been constructed through the use of State Aid Funds. This 10% limitation was eliminated during the 1982 Legislative Session.

Bituminous surface treatments need to be resealed on an average of every five or six years to protect the surfaces and the investments made therein. A total of 29,278.6 miles have been resealed, with 385.6 miles of this total being contracted during the 2008 fiscal year.

The Legislature, during the 1982 Regular Session, amended Section 65-9-25 of the Mississippi Code of 1972 to permit additional State Aid funds to be used for maintenance, repair and reconstruction of State Aid roads which have been constructed in accordance with State Aid standards and specifications.

PROGRESS OF PROGRAM

Projects Placed Under Contract from July 1, 2007 thru June 30, 2008

	#	Miles	Cost
LSBP Projects (55 Bridges Replaced)	50	5.240	12,809,894
LSRP (LSBP Funds)	0	0.000	0
LSRP (SA Funds)	3	2.346	2,082,900
Total LSBP and LSRP Projects (LSBP & SA Funds)	53		14,892,794.00
State Aid & Federal Aid Projects (<u>including</u> Bridge Inspections)			
Construction			
Grading, Drainage Structures & Paving		37.621	
Grading, Drainage Structures & Gravel Surface		0.000	
Bridges (35)		1.682	
Asphalt Overlay Construction		48.429	
Total Construction Improvements	51	87.732	68,499,513
Reseal & Maintenance Projects (Previously Paved State Aid Routes)	28	385.578	19,990,800
Total State Aid & Federal Aid Project (<u>including</u> Bridge Inspections)	79		88,490,313

NOTE: The above totals, by Counties, are included elsewhere in this report.

Amounts and Types of Funds Contracted:

State Aid		39,225,946
County		4,963,316
Federal Funds:		
MDOT Funds		0
Surface Transportation		8,991,380
Appalachian Access		1,299,400
Bridge Replacement		2,884,700
Bridge Inspection		0
Bridge Posting		0
Congestion Relief		0
Defense Access		0
Development Infrastructure		200,135
Emergency Relief		6,272,852
Federal Land Highways		0
High Priority		24,502,584
High Risk Rural Road (HRRRP)		0
National Corridor Planning & Development (NCPD)		0
Rural Infrastructure Fund (RIF)		150,000
Transportation-Community-System Preservation (TCSP)		0
Total Funds Contracted		88,490,313
Grand Total all Projects	132	103,383,107

Projects Completed and/or Placed Under Contract from Beginning of Program in June, 1950, thru June 30, 2008

	<u>#</u>	<u>Miles</u>	<u>Cost</u>
LSBP Projects (1,435 Bridges Replaced)	795	149.897	229,245,747
LSRP (LSBP Funds)	3	13.490	3,102,300
LSRP (SA Funds)	10	8.228	3,317,195
Total LSBP and LSRP Projects (LSBP & SA Funds)	808		235,665,242.00
State Aid & Federal Aid Project (including Bridge Inspections)			
Construction			
Grading, Drainage Structures & Paving		10,971.221	
Grading, Drainage Structures & Gravel Surface		834.524	
Bridges (4,611)		110.005	
Asphalt Overlay Construction		3,137.611	
Total Construction Improvements	8,314	15,053.361	2,030,335,907
Reseal & Maintenance Projects (Previously Paved State Aid Routes)	1,436	29,278.594	496,477,270
Total State Aid & Federal Aid Project (including Bridge Inspections)	9,750		2,526,813,177
Grand Totals all Projects	10,558		2,762,478,419

NOTE: The above totals, by Counties, are included elsewhere in this report.

Projects in Contract Stage as of June 30, 2008

	#	Miles	Cost
LSBP Projects	72	11.350	21,522,094
LSRP (LSBP Funds)	0	0.000	0
LSRP (SA Funds)	3	2.348	2,082,900
Total LSBP and LSRP Projects (LSBP & SA Funds)	75		23,604,994
State Aid Projects (State Aid Funds):			
Construction	51	46.359	34,134,300
Maintenance	24	72.960	14,876,800
Reseal	15	536.600	18,348,810
Federal Aid Projects (State Aid , Federal & LSBP Funds):			
Surface Transportation	24	45.895	32,712,595
Appalachian Access	6	5.623	3,676,350
Bridge Replacement	28	10.156	23,940,530
Bridge Inspection	4	0.000	2,283,722
Bridge Posting	0	0.000	0
Congestion Relief	0	0.000	0
Defence Access	0	0.000	0
Emergency Relief	8	56.798	7,637,858
High Priority	16	99.856	50,741,464
High Risk Rural Road (HRRRP)	1	0.776	1,321,000
Public Land Highways	2	15.290	941,055
Railroad Signal	0	0.000	0
Total State Aid & Federal Aid Projects	179	890.313	190,614,484
Grand Totals all Projects	254	904	214,219,478

Estimated Program Volume for July 1, 2008, thru June 30, 2009

It is difficult to estimate the miles of construction and reseal improvements that will be let to contract during the coming fiscal year. However, the State Aid Road Construction Program has the potential for a \$100 to \$215 million total program for the fiscal year 2009. In addition, we expect to place under contract \$20 million in LSBP Funds.

As of June 30, 2008, programs (proposed improvements) have been adopted by the Boards of Supervisors and approved by the State Aid Engineer for the following work:

Type of Projects	Number of Projects	Estimated Cost
Total LSBP (System 81)	117	26,463,868
Total LSRP (LSBP Funds)(System 80)	1	143,750
Total LSRP (SA Funds)(System 80)	5	1,932,400
State Aid: (State Aid Funds Only)		
Construction (System 81)	52	21,194,688
Maintenance (System 81)	34	12,350,152
Reseal (System 81)	28	35,405,573
State Aid & Federal Aid Funds		
STP (System 82)	42	25,819,734
STPG (System 32)	2	734,917
AGMC (System 64)	0	0
APL (System 36)	6	3,220,002
BR (System 85)	78	69,875,844
BR-NBIS (System 85)	0	0
BR-NBIX (System 85)	0	0
EFLH (System 63)	5	1,248,200
ER (System 66)	7	1,718,410
HRRRP (System 25)	7	1,857,500
MS, FBD (System 19)	25	36,846,177
PLH (System 62)	3	2,015,602
Total State Aid	289	\$212,286,799
GRAND TOTAL	412	\$240,826,817

The Boards of Supervisors began the new four-year term on January 1, 2008, and have available for planning and expenditure purposes 90% of the State Aid revenue that will accrue during the 2008-2011 period.

Bridge Replacement and Rehabilitation is a major Federal program that has helped the counties to improve the seriously deficient condition of many State Aid and Federal Aid System bridges. Historically, the Mississippi Department of Transportation transferred approximately 30% of the Bridge Replacement funds that are apportioned to the State Aid program for replacement of deficient bridges on county roads. In FY 08, \$15,925,751 was transferred. State Aid is projected to receive for FY 09, \$14,082,533 to be transferred by Mississippi Department of Transportation.

The cost per mile for the construction of projects, embracing grading, drainage structures, small bridges, base and bituminous surfacing, ranges from \$153,526.50 per mile to \$1,302,802.24 per mile, depending on the soil conditions, availability of construction materials and terrain. The average cost of construction projects in fiscal year 2008 was \$481,606. per mile.

Projects involving large bridges with long spans and/or projects requiring higher design standards because of heavy traffic demands or other special conditions should not be considered in these cost ranges.

Liquid seal (resealing) projects range from \$29,095 to \$51,352 per mile, depending on the location and on the leveling and base course corrections needed. The average cost of reseal projects in fiscal year 2008 was \$35,801 per mile.

REVENUE SOURCES AND AMOUNTS

Revenues for the State Aid Program are derived from the following state and federal sources:

State Sources:

- (a) Section 27-65-75, Mississippi Code of 1972 (as amended by the 1994 and 1999 Regular Sessions of the Legislature), provides for a minimum diversion of \$48,000,000 or 23.25%, whichever is greater, from gasoline, diesel fuel or kerosene tax revenue and \$3,000,000 from sales tax collections into the Office of State Aid Road Construction special fund in each fiscal year. Senate Bill 2100 gave the Bond Commission authority to issue \$20,000,000 in bonds for FY 2005 and \$20,000,000 in bonds for FY 2006 for the Local System Bridge Program (LSBP). In FY 2005 we received \$3,000,000 in advance against the FY 2005 future bond issue. In FY 2006 we received \$17 million for the remainder of the FY 2005 bond issue. We received \$4 million in advance against the FY 2006 future bond issue. Senate Bill 3086 and 3201 gave the Bond Commission authority to issue \$20 million in bonds for FY 2007 and FY 2008 respectively. House Bill 1665 gave the Bond Commission authority to issue \$15 million in bonds for FY 2009. The State Treasurer and State Bond Commission have committed to issuing commercial paper to generate short term funds when needed to obligate to projects when bond proceeds are not yet available. The LSBP fund earned interest on investments in the amount of \$154,512.32 for FY 2008.
- (b) Section 65-9-17 authorizes the counties to use County funds to supplement State Aid funds for the construction of State Aid roads.

Federal Sources (Regular):

MDOT provides a portion of the Surface Transportation Program funds and Bridge Replacement funds made available to the State of Mississippi by the Federal Government to the counties through the State Aid Office.

Federal Sources (Special):

- (a) Emergency Relief funds are made available by the Federal Government to the counties through the State Aid Office on an individual project basis, to reconstruct roads and bridges on Federal Aid highways damaged or destroyed by floods, hurricanes, catastrophic failure and other disasters.
- (b) Appalachian Access Highway funds are made available to the counties in the twenty-four county Appalachian area in northeast Mississippi on an individual project basis. These projects are administered by the State Aid Office on an individual project basis through the Federal Highway Administration.
- (c) Other funds earmarked by Congress for selected counties.

RECEIPTS AND DISBURSEMENTS

	State Aid Road Fund	Administration Fund	Local System Bridge Fund
BEGINNING FUNDS BALANCE 07/01/07			
Unobligated Funds	44,496,221.43	571,511.72	5,291,932.20
Project Funds	8,292,364.19	0.00	10,314,735.83
Federal-Aid Matching Funds	(66,694.22)		
Total Beginning Funds Balance	52,721,891.40	571,511.72	15,606,668.03

RECEIPTS

Gasoline Tax(Section 27-65-75)	54,189,662.86		
Sales Tax(Section 27-65-75)	3,000,000.00		
County Contributions	4,848,838.54		393,000.00
FHWA Reimbursements	37,203,371.00		
Federal Aid Matching Requirements	0.00		
DS Reimbursements from FHWA	0.00		
Loan from MDB	0.00		
MDOT Matching Revenue-APL Projects	0.00		
Interest on Investments			154,512.32
Transfers in		3,389,656.00	20,290,366.48
Refunds, Miscellaneous Revenue/MDA	219,235.00	323,244.56	107,371.00
Total Receipts	99,461,107.40	3,712,900.56	20,945,249.80
Total Funds Available for Expenditures	152,182,998.80	4,284,412.28	36,551,917.83

DISBURSEMENTS

Construction Expenditures

State Construction	39,776,711.18		14,139,928.73
Federal-aid Construction	45,154,559.83		
Debt Service Construction	236,517.73		
Retainage	45,722.34		79,756.69
MDOT Testing	(12,601.90)		135,323.66
Total Construction	85,200,909.18	0.00	14,355,009.08

Other Expenditures

Transfers to State Highway Fund 3941	0.00		
Transfer to Administration Fund	3,389,656.00		
Transfer to Other Funds	0.00		107,371.00
Payments on MDB Loan	4,630,115.01		
Interest and Service Charges			
Administrative Expenditures		3,560,651.75	
Refund to Counties and Misc. Transfers	676,513.14		0.00
Total Other Disbursements	8,696,284.15	3,560,651.75	107,371.00

FUNDING SUMMARY

FUNDS MADE AVAILABLE DURING FY 2008

Sources:

Gasoline Tax (Section 27-65-75)	54,189,663.00	
Sales Tax	3,000,000.00	
County Contributions	5,241,839.00	
Local System Bridge Funds	20,290,366.00	
Interest on Investments	154,512.00	
Refunds and Miscellaneous Revenue	649,851	
Administrative Transfer from Counties	3,389,656	
Transfer to Budget Contingency Fund		
Federal Funds--		
FHWA Reimbursements	37,203,371	
Total Federal Funds	37,203,371	
Total Fiscal Year Revenue		124,119,258
Less: Requirements for Administrative Expenses		(3,389,656)
Total Funds Made Available for Construction During FY 2008		120,729,602

PROJECTION OF REVENUE FOR FY 2009 AND FY 2010

Sources:

	<u>FY 2009</u>	<u>FY 2010</u>
Gasoline Tax (Section 27-65-75)	57,000,000	57,000,000
Sales Tax	3,000,000	3,000,000
General Funds or Bond Sales	0	0
Local System Bridge Funds	20,000,000	20,000,000
Interest on Investments	135,000	135,000
Refunds and Miscellaneous Revenue	700,000	700,000
County Contributions	5,040,000	5,040,000
Federal Aid Funds--		
Surface Transportation Program	7,400,000	7,400,000
Appalachian Access Highways	765,000	765,000
Bridge Replacement	16,000,000	16,000,000
Debt Service Loans	6,000,000	6,000,000
Priority Projects	65,835,000	65,835,000
Total Fiscal Year Revenue	181,875,000	181,875,000
Less: Requirements for Administrative Expenses	(3,614,241)	(3,618,035)
Total Revenue Available for Construction	178,260,759	178,256,965

SUMMARY OF ADMINISTRATIVE EXPENSES

Salaries, Wages and Fringe Benefits:

Employer's Contributions:		
Salaries and Wages	2,096,057.39	
Personal Leave Pay	199.73	
SPAHRs Refund of Deductions	19,061.61	
Retirement Matching	250,698.26	
Social Security Matching	155,488.78	
Workers' Compensation	9,913.00	
Group Health Insurance	195,730.00	
Group Life Insurance	4,666.98	
Unemployment Insurance Tax		
Cafeteria Plan	2,275.25	\$ 2,734,091.00

Travel:

In-State	25,756.00	
Out-of-Country	0.00	
Out-of-State	4,155.00	29,911.00

Contractual Services:

Tuition	0.00	
Employee Training	8,511.00	
Travel Related Registration	940.00	
Postage	10,000.00	
Freight	3,292.00	
Advertising & Public Information	176.00	
Rental of Office Equipment	16,312.00	
Repair/Service Passenger Vehicle	6,289.00	
Repair/Service Office Equipment	0.00	
Fees and Professional Services--		
MDOT Engineering Services	274,606.00	
SAAS	6,454.00	
MMRS	9,058.00	
Audit Department	6,354.00	
State Personnel Board	8,710.00	
Personal Service Contracts	55,954.00	
Temporary Employment Fees	14,060.00	
Contract Worker	4,264.00	
Other	106,646.00	

Other Contractual Services:

Tort Claims Board Assessment	8,326.00	
Insurance and Fidelity Bonds	2,253.00	
Insurance Computer Equipment	287.00	
Membership Dues	160.00	
Subscription	0.00	
Procurement Card/Contractual Purchases	756.00	

SUMMARY OF ADMINISTRATIVE EXPENSES

Information Technology:		
IS Professional Fees - Outside Vendor	1,870.00	
ITS Fees		
ITS Training/Education	6,536.00	
Service Fees to State Computer Center	34,819.00	
Software Acquisition	2,088.00	
Telephone--		
Monthly Fee	16,710.00	
Long Distance	1,162.00	
Usage Time Cellular Telephones	8,324.00	
Maintenance/Repair of IS Equipment	1,221.00	
Maintenance/Repair Comm System	3,447.00	
Prior Year Expense	1,800.00	621,385.00
Commodities:		
Printing and Binding	2,500.00	
Duplication Supplies	1,398.00	
Office Supplies and Materials	4,022.00	
Paper Supplies	1,970.00	
Maps and Manuals	179.00	
Office Equipment	4,564.00	
Fuels Gasoline	31,431.00	
Fuel Card - Oils, Greases, Etc.	0.00	
Tires and Tubes - Auto	1,835.00	
Expendable Repair Vehicle	660.00	
Expendable Repair Parts Office Equip	475.00	
Batteries	56.00	
Other Equipment Repair Parts	20.00	
Engineering Supplies		
Information System Equipment Repair Parts	9,958.00	
Other Supplies and Materials	2,490.00	
Procurement Card Purchases	1,872.00	
Prior Year Expense	217.00	
Other Equipment	0.00	63,647.00
Capital Outlay:		
Automobiles	47,400.00	
Office Machines, Furniture & Fixtures	33,611.00	
Mainframe Systems Equipment	30,306.00	
Wireless Comm. Devices	300.00	111,617.00
Total		\$ 3,560,651.00

OUT-OF-STATE TRAVEL TO CONVENTIONS AND MEETINGS

Employee's Name	Travel Destination	Travel Meeting Title	Total Amount
KIMBERLY COOPER	ST. LOUIS, MO	2008 AASHTO	\$ 333.00
KIMBERLY COOPER	ST. LOUIS, MO	2008 AASHTO	\$ 630.74
LANNY GLOVER	HUNTSVILLE, AL	SASHTO 2007	\$ 378.22
DAN JORDAN	CLEAR POINT, AL	SOUTHERN. STATES & FED. TRANS. FIN.	\$ 1,000.11
BROOKS MILLER	HUNTSVILLE, AL	SASHTO 2007	\$ 1,182.80
BROOKS MILLER	RICHMOND, VA	NACO CONFERENCE	\$ 1,953.35
BROOKS MILLER	SAN FRANCISCO, CA	MRBA 2008 CONVENTION	\$ 346.60
CAREY WEBB	BIRMINGHAM, AL	AUBURN UNIV. CONT EDUCATION	\$ 117.45
	Grand Total		\$5,942.27

AUTOMOBILE EXPENDITURES FOR STATE-OWNED VEHICLES

Make/Model	Unit #	Year	Tag #	Cost	Cost of Use Estimate	Operating Expense	Total Expense	Miles Traveled	Cost per Mile
Ford/Taurus	1154	2004	G028358	11,893	1,516.43	1,960.52	6,450.20	53,426	0.12073
Ford/Crown Victoria	1169	2004	G011081	19,786	842.60	1,013.50	6,802.60	32,927	0.2066
Ford/Taurus	1246	2005	G032909	12,396	388.62	1,331.53	5,852.15	30,619	0.19113
Ford/Taurus	1248	2005	G032906	12,396	294.71	831.53	5,258.24	22,215	0.23670
Ford/Taurus	1249	2005	G032905	12,396	417.63	781.72	5,331.35	10,198	0.52278
Ford/Crown Victoria	1250	2005	G032908	19,288	731.58	736.34	7,897.25	18,714	0.42200
Ford/Crown Victoria	1292	2006	G036547	19,792	232.87	828.49	7,658.69	23,853	0.32108
Chevrolet/Malibu	1390	2007	G042497	14,990	34.95	1,601.82	9,131.77	24,729	0.36927
Chevrolet/Impala	1402	2008	G044301	15,800	34.95	1,230.54	17,065.49	14,093	1.21092
Chevrolet/Impala	1403	2008	G044300	15,800	108.89	2,440.74	18,349.63	27,684	0.66282
Chevrolet/Impala	1404	2008	G044300	15,800	179.96	1,607.02	17,586.98	22,295	0.78883

IMPROVEMENTS LET TO CONTRACT FROM JULY 1, 2007 THRU JUNE 30, 2008

County	Construction Miles and Cost						Reseal & Maintenance		
	Surfacing	Grading & Gravel	Bridges		Resurfacing	Total Miles	Cost	Miles	Cost
			#	Miles					
Adams	1.249	-	-	-	-	1.249	1,813,200	22.693	868,700
Alcorn	0.148	-	1	0.029	-	0.177	754,100	14.062	626,700
Amite	1.581	-	1	0.005	-	1.586	1,044,100	-	0
Attala	0.208	-	2	0.041	-	0.249	1,086,400	-	0
Benton	2.757	-	-	-	-	2.757	1,158,200	0.036	72,000
Bolivar	-	-	-	-	-	-	-	-	0
Calhoun	-	-	-	-	-	-	-	-	0
Carroll	-	-	-	-	-	-	-	-	0
Chickasaw	-	-	-	-	-	-	-	-	0
Choctaw	0.100	-	1	0.004	-	0.104	214,100	-	0
Claiborne	-	-	-	-	-	-	-	-	0
Clarke	0.419	-	2	0.067	-	0.486	1,324,800	2.260	471,300
Clay	-	-	-	-	-	-	-	-	0
Coahoma	-	-	-	-	0.348	0.348	390,000	24.293	0
Copiah	-	-	-	-	4.054	4.054	361,900	-	0
Covington	0.207	-	1	0.009	-	0.216	506,900	23.995	1,373,000
DeSoto	0.623	-	2	0.006	3.965	4.594	8,848,300	7.029	2,230,800
Forrest	-	-	-	-	-	-	-	-	0
Franklin	4.197	-	-	-	-	4.197	1,006,400	-	0
George	-	-	-	-	-	-	-	-	0
Greene	-	-	-	-	-	-	-	-	0
Grenada	-	-	-	-	-	-	-	-	0
Hancock	-	-	-	-	14.126	14.126	3,044,356	6.550	1,245,900
Harrison	0.170	-	2	0.050	-	0.220	851,500	-	0
Hinds	0.053	-	-	-	-	0.053	200,000	-	0
Holmes	-	-	-	-	-	-	-	-	0
Humphreys	-	-	-	-	-	-	-	-	0
Issaquena	-	-	-	-	-	-	-	5.003	1,356,200
Itawamba	-	-	-	-	2.707	2.707	570,500	-	0
Jackson	-	-	-	-	-	-	-	-	0
Jasper	-	-	-	-	-	-	-	-	0
Jefferson	-	-	-	-	-	-	-	22.956	1,188,100
Jefferson Davis	-	-	-	-	-	-	-	-	0
Jones	0.296	-	2	0.041	-	0.337	808,400	6.570	917,300
Kemper	-	-	-	-	-	-	-	-	0
Lafayette	0.064	-	2	0.013	-	0.077	413,800	4.105	445,200
Lamar	-	-	-	-	-	-	-	-	0
Lauderdale	-	-	-	-	-	-	-	-	0
Lawrence	5.585	-	6	1.076	7.549	14.210	25,206,485	-	0
Leake	-	-	-	-	-	-	-	-	0
Lee	0.511	-	1	0.029	-	0.540	1,046,150	0.454	90,500
Leflore	-	-	-	-	-	-	-	-	0
Lincoln	3.349	-	1	0.004	-	3.353	1,827,400	46.743	1,636,900
Lowndes	-	-	-	-	-	-	-	-	0
Madison	0.061	-	1	0.037	5.147	5.245	2,815,800	-	0

IMPROVEMENTS LET TO CONTRACT FROM JULY 1, 2007 THRU JUNE 30, 2008

County	Construction Miles and Cost						Reseal & Maintenance		
	Surfacing	Grading & Gravel	Bridges		Resurfacing	Total Miles	Cost	Miles	Cost
			#	Miles					
Marion	2.159	-	-	-	-	2.159	910,600	-	0
Marshall	0.179	-	2	0.015	-	0.194	640,700	-	0
Monroe	-	-	-	-	-	-	-	-	0
Montgomery	-	-	-	-	-	-	-	-	0
Neshoba	2.613	-	-	-	-	2.613	1,107,000	-	0
Newton	-	-	-	-	-	-	-	-	0
Noxubee	-	-	-	-	-	-	-	-	0
Oktibbeha	1.179	-	-	-	-	1.179	1,010,600	5.795	687,300
Panola	-	-	-	-	-	-	-	3.022	384,400
Pearl River	0.148	-	1	0.022	5.109	5.279	2,711,000	56.219	810,500
Perry	2.439	-	-	-	-	2.439	2,033,300	-	0
Pike	-	-	-	-	-	-	-	-	0
Pontotoc	-	-	-	-	-	-	-	-	0
Prentiss	0.902	-	2	0.034	-	0.936	523,900	-	0
Quitman	-	-	-	-	-	-	-	-	0
Rankin	-	-	-	-	-	-	-	-	0
Scott	-	-	-	-	-	-	-	-	0
Sharkey	-	-	-	-	-	-	-	2.291	746,000
Simpson	-	-	-	-	-	-	-	28.371	1,619,400
Smith	-	-	-	-	-	-	-	-	0
Stone	0.296	-	2	0.034	5.424	5.754	1,835,625	-	0
Sunflower	-	-	-	-	-	-	-	-	0
Tallahatchie	1.609	-	-	-	-	1.609	376,800	-	0
Tate	-	-	-	-	-	-	-	-	0
Tippah	-	-	-	-	-	-	-	-	0
Tishomingo	-	-	-	-	-	-	-	-	0
Tunica	-	-	-	-	-	-	-	-	0
Union	-	-	-	-	-	-	-	64.214	1,473,100
Walthall	-	-	-	-	-	-	-	0.449	39,400
Warren	0.114	-	1	0.158	-	0.272	643,900	2.011	790,100
Washington	-	-	-	-	-	-	-	-	0
Wayne	-	-	-	-	-	-	-	-	0
Webster	-	-	-	-	-	-	-	-	0
Wilkinson	-	-	-	-	-	-	-	-	0
Winston	4.405	-	2	0.008	-	4.413	1,398,341	26.616	843,200
Yalobusha	-	-	-	-	-	-	-	9.841	74,800
Yazoo	-	-	-	-	-	-	14,956	-	0
Statewide									
Totals	37.621	0.000	35	1.682	48.429	87.732	68,499,513	385.578	19,990,800

OFFICE OF STATE AID ROAD CONSTRUCTION

FY 2008 ANNUAL REPORT

IMPROVEMENTS MADE ON THE STATE AID SYSTEM FROM JUNE 30, 1950, THRU JUNE 30, 2008

County	State Aid Mileage			State Aid Improvements										Funds Expended or Obligated To Contact	
	Total Allocation	Actually Designated	Paved Mileage	Grading & Grav. Surf.	Brs. Structural #	Total Actual Miles		Overlay or Resurf.	Total Construction	Surfacing Reseal/Maint.	To Contact				
						Miles	Miles				Construction	Reseal/Maint.	Construction	Reseal/Maint.	
Adams	244.42	190.60	48.436	0.742	19	0.604	49.782	37.698	87.480	120.163	20,742,953	2,952,756			
Alcorn	280.16	185.10	112.348	1.788	49	0.986	115.122	27.107	142.229	276.894	21,982,503	5,078,621			
Amite	398.65	253.15	191.086	3.889	52	1.344	196.319	55.216	251.535	584.328	27,247,270	7,876,245			
Attala	345.03	250.85	144.592	8.707	64	1.561	154.860	-	154.860	535.210	25,595,440	6,098,198			
Benton	205.57	167.00	104.782	9.564	32	0.609	114.955	-	114.955	171.104	14,985,598	2,825,702			
Bolivar	339.41	202.70	101.351	7.117	46	0.874	109.342	80.137	189.479	207.487	25,281,951	4,800,249			
Calhoun	321.72	235.30	129.197	15.738	91	1.632	146.567	47.753	194.320	456.079	24,454,965	5,829,543			
Carroll	300.74	203.20	110.090	13.025	66	1.419	124.534	46.056	170.590	300.827	22,390,008	5,515,212			
Chickasaw	247.19	195.88	104.970	15.353	65	1.317	121.640	0.463	122.103	307.662	17,225,246	5,381,793			
Choctaw	235.68	199.70	111.873	30.469	84	1.479	143.821	0.225	144.046	327.534	18,894,336	6,023,306			
Claiborne	240.12	154.50	92.636	10.000	25	1.202	103.838	86.751	190.589	221.831	21,450,557	4,857,177			
Clarke	370.67	291.00	206.434	0.862	56	1.586	208.882	32.970	241.852	672.094	25,704,702	8,367,958			
Clay	223.90	168.00	96.968	9.725	64	1.503	108.196	30.530	138.726	277.944	30,502,459	5,268,247			
Coahoma	340.37	216.10	150.493	1.345	27	0.793	152.631	160.610	313.241	366.866	25,003,221	5,084,101			
Copiah	442.94	387.70	240.339	4.415	106	2.654	247.408	27.359	274.767	645.405	38,701,144	7,975,675			
Covington	289.12	223.80	146.394	2.344	74	2.337	151.075	9.994	161.069	584.911	18,771,331	7,976,451			
DeSoto	345.17	197.40	100.430	20.603	50	0.954	121.987	29.826	151.813	168.385	31,408,610	8,504,275			
Forrest	319.89	260.60	63.807	5.608	70	2.105	71.520	74.350	145.870	310.567	22,977,528	7,398,605			
Franklin	398.65	225.88	162.772	0.980	39	1.596	165.348	37.215	202.563	412.054	28,218,481	6,754,754			
George	258.73	177.30	123.949	5.210	47	1.113	130.272	11.302	141.574	293.555	17,821,172	5,376,687			
Greene	412.64	290.30	207.278	9.549	90	2.087	218.914	39.261	258.175	454.205	37,384,490	4,540,580			
Grenada	214.27	159.68	101.101	1.914	31	0.740	103.755	25.741	129.496	394.967	29,669,330	5,804,814			
Hancock	251.92	163.20	96.943	10.139	41	0.675	107.757	34.527	142.284	189.897	35,259,019	6,125,616			
Harrison	414.63	267.70	133.892	1.871	49	1.934	137.697	22.187	159.884	381.071	37,060,194	8,215,810			
Hinds	440.95	367.00	247.575	1.504	36	1.284	250.363	87.520	337.883	242.201	31,535,155	8,097,929			
Holmes	445.27	322.40	222.485	18.381	60	1.410	242.276	66.023	308.299	679.051	29,661,698	8,262,024			
Humphreys	223.26	204.90	111.017	16.225	32	0.576	127.818	7.143	134.961	253.435	12,951,549	6,378,169			
Issaquena	128.89	91.10	36.131	21.852	7	0.161	58.144	28.007	86.151	105.077	6,632,842	4,734,432			
Itawamba	326.98	222.35	160.951	6.298	79	1.693	168.942	16.146	185.088	331.881	26,196,469	6,281,668			
Jackson	351.66	146.30	60.193	6.723	28	1.378	68.294	7.893	76.187	87.990	23,647,787	5,447,710			
Jasper	307.73	291.40	172.617	4.278	74	1.850	178.745	26.025	204.770	387.136	26,166,079	5,257,250			
Jefferson	221.47	188.80	74.806	6.345	44	1.048	82.199	21.256	103.455	298.948	15,409,300	5,529,277			

OFFICE OF STATE AID ROAD CONSTRUCTION

FY 2008 ANNUAL REPORT

IMPROVEMENTS MADE ON THE STATE AID SYSTEM FROM JUNE 30, 1950, THRU JUNE 30, 2008

County	State Aid Mileage			State Aid Improvements										Funds Expended or Obligated To Contact	
	Total Allocation	Actually Designated	Paved Mileage	Grading & Grav. Surf.	Brs. Structural #	Miles		Total Actual Miles	Overlay or Resurf.	Total Construction	Surfacing Reseal/Maint.	Construction	Reseal/Mant.		
						#	Miles								
Jefferson Dav	251.58	162.83	112.775	3.829	54	1.233	117.837	46.067	163.904	359.894	15,734,053	7,070,408			
Jones	502.20	329.30	178.889	30.507	78	2.299	211.695	49.439	261.134	528.894	35,457,234	8,785,289			
Kemper	382.33	288.35	205.216	34.647	85	1.556	241.419	29.968	271.387	360.768	28,896,467	4,941,148			
Lafayette	341.95	184.70	108.080	8.410	99	1.890	118.380	31.046	149.426	339.538	23,837,546	5,700,653			
Lamar	318.10	207.78	110.304	1.474	50	1.506	113.284	87.450	200.734	477.451	22,024,372	7,293,540			
Lauderdale	439.39	412.30	246.918	1.619	61	1.307	249.844	96.368	346.212	461.710	24,985,416	8,459,098			
Lawrence	261.10	212.82	125.845	8.177	64	2.483	136.505	73.548	210.053	399.826	49,411,770	5,698,371			
Leake	296.54	223.33	146.788	11.073	60	1.455	159.316	15.997	175.313	333.017	25,499,797	4,830,169			
Lee	343.24	194.40	108.326	17.876	72	1.469	127.671	19.648	147.319	357.368	30,354,249	8,651,546			
Leflore	311.14	275.90	134.409	5.456	59	2.585	142.450	6.988	149.438	522.060	24,425,545	7,691,670			
Lincoln	433.62	358.80	201.164	4.187	69	1.829	207.180	31.596	238.776	548.208	37,676,436	8,233,752			
Lowndes	334.88	189.00	112.242	6.966	60	1.325	120.533	118.537	239.070	290.509	28,709,888	5,439,887			
Madison	369.85	285.30	154.506	3.352	56	1.390	159.248	57.271	216.519	421.207	28,593,992	4,383,339			
Marion	331.94	287.60	185.490	8.838	62	1.226	190.554	92.845	283.399	546.878	21,276,800	7,828,372			
Marshall	315.61	211.00	116.067	8.431	42	1.497	125.995	11.534	137.529	179.813	30,117,185	3,480,338			
Monroe	328.95	203.70	142.349	7.454	45	0.904	150.707	26.800	177.507	356.842	22,867,425	6,104,723			
Montgomery	251.78	209.45	89.916	24.223	80	1.509	115.648	10.429	126.077	279.774	19,400,040	5,850,254			
Neshoba	377.67	312.20	185.515	34.354	87	1.514	221.383	9.884	231.267	344.536	30,044,438	4,644,892			
Newton	296.86	273.00	170.391	6.404	67	1.048	177.843	12.234	190.077	318.597	22,999,168	4,738,648			
Noxubee	317.05	222.00	127.970	6.497	56	1.125	135.592	19.013	154.605	332.594	23,043,751	4,255,290			
Oktober	285.13	202.40	132.558	10.305	24	0.411	143.274	21.228	164.502	413.943	17,883,883	4,879,097			
Panola	380.40	250.40	157.428	6.412	54	1.174	165.014	113.973	278.987	415.412	29,919,970	4,347,510			
Pearl River	410.01	239.60	146.134	14.277	60	1.806	162.217	49.026	211.243	589.841	28,260,269	8,299,020			
Perry	286.75	223.80	90.159	6.040	62	1.463	97.662	32.700	130.362	408.217	23,087,390	6,166,806			
Pike	338.50	257.10	131.798	15.512	57	1.266	148.576	7.637	156.213	447.221	20,648,726	8,297,238			
Pontotoc	267.15	180.09	98.043	10.225	24	0.563	108.831	4.712	113.543	231.891	14,534,461	5,836,926			
Prentiss	281.65	198.52	123.957	20.356	69	1.379	145.692	22.492	168.184	235.924	24,016,243	4,600,654			
Quitman	217.38	184.60	86.054	6.238	49	1.346	93.638	24.492	118.130	133.779	16,061,371	3,466,694			
Rankin	541.49	270.20	136.958	10.242	81	1.523	148.723	92.167	240.890	284.887	43,644,747	9,143,163			
Scott	310.55	223.30	135.677	15.120	84	1.219	152.016	11.786	163.802	359.176	19,782,850	6,628,032			
Sharkey	164.28	111.60	73.556	14.392	15	0.468	88.416	36.992	125.408	164.447	10,676,174	4,998,596			
Simpson	348.73	286.75	171.519	3.872	78	2.027	177.418	20.196	197.614	513.837	27,986,657	7,165,003			

OFFICE OF STATE AID ROAD CONSTRUCTION

FY 2008 ANNUAL REPORT

IMPROVEMENTS MADE ON THE STATE AID SYSTEM FROM JUNE 30, 1950, THRU JUNE 30, 2008

County	State Aid Mileage			State Aid Improvements										Funds Expended or Obligated To Contact	
	Total Allocation	Actually Designated	Paved Mileage	Grading & Grav. Surf.	Brs. Structural		Total Actual Miles	Overlay or Resurf.	Total Construction	Surfacing Reseal/Maint.	To Contact				
					#	Miles					Construction	Reseal/Mant.			
Smith	321.72	260.00	182.810	10.627	66	1.816	195.253	14.211	209.464	473.333	28,285,264	5,877,092			
Stone	223.60	181.90	125.765	2.088	35	0.685	128.538	49.017	177.555	295.569	17,846,864	3,445,860			
Sunflower	412.64	249.80	137.842	22.194	51	1.560	161.596	55.264	216.860	236.221	30,172,532	5,064,958			
Tallahatchie	296.07	289.43	142.449	21.900	40	1.295	165.644	23.341	188.985	460.663	22,245,820	7,588,635			
Tate	244.16	164.80	51.274	17.418	58	1.674	70.366	25.072	95.438	158.914	19,214,068	4,304,906			
Tippah	290.95	217.30	138.156	13.654	50	0.789	152.599	9.368	161.967	238.728	22,358,783	3,270,569			
Tishomingo	263.67	205.00	122.546	4.107	55	1.175	127.828	62.973	190.801	149.467	22,177,193	5,685,919			
Tunica	242.45	204.20	139.189	12.521	78	0.582	152.292	92.584	244.876	194.350	17,662,552	4,178,591			
Union	277.64	188.10	107.103	16.112	46	1.007	124.222	17.358	141.580	234.215	24,513,526	5,363,487			
Walthall	274.85	218.86	126.857	3.129	68	1.325	131.311	28.163	159.474	480.059	17,761,402	8,375,629			
Warren	284.23	193.20	67.877	8.015	30	0.920	76.812	47.143	123.955	230.152	21,944,088	4,234,856			
Washington	377.67	359.50	77.808	0.499	54	1.688	79.995	71.274	151.269	105.026	31,197,721	5,186,288			
Wayne	410.31	372.10	221.180	11.439	70	1.736	234.355	8.297	242.652	632.384	27,335,692	9,772,871			
Webster	277.42	209.20	106.923	7.263	75	1.217	115.403	5.187	120.590	532.608	17,426,382	7,778,285			
Wilkinson	223.80	152.90	95.054	1.636	29	0.819	97.509	39.793	137.302	274.195	17,575,769	5,054,172			
Winston	296.54	285.05	202.589	34.845	64	1.132	238.566	23.093	261.659	291.593	27,600,138	3,778,392			
Yalobusha	212.75	176.70	99.456	1.284	45	0.818	101.558	-	101.558	479.070	15,160,603	5,679,334			
Yazoo	400.98	317.80	211.406	11.465	37	1.468	224.339	104.119	328.458	807.229	25,806,799	9,306,462			
Totals	25,857.04	19,018.85	10,971.221	834.524	4,611	110.005	11,915.750	3,137.611	15,053.361	29,278.594	2,019,076,897	496,477,270			

STATE AID PROGRAM CONSTRUCTION AND ENGINEERING DISBURSEMENTS BY COUNTY AND SYSTEM FROM JULY 1, 2007 THRU JUNE 30, 2008

COUNTY	RR CROSSING		MDOT HIGH PRIORITY MS System	HIGH RISK RURAL ROAD PROGRAM System	RURAL SECONDARY GRADE RSG/STPG System	ACCESS HIGHWAY LAKES AHL System	APPALACHIAN HIGHWAY ACCESS		PUBLIC LAND HIGHWAYS PLH System	DEFENSE ACCESS AGMC System	EMERGENCY RELIEF System	CONGESTION RELIEF System	LOCAL SYSTEM ROAD PROJECTS System	STATE AID PROJECTS SAP System	SURFACE TRANSPORTATION RURAL COUNTIES		BRIDGE REPLACEMENT BR System	TOTALS BY COUNTY	
	RR & RR SIGNAL RRP/STP-S System	01 & 02 System					APL System	System							36	62			64
Adams														1,140,069.22		82 & 46		6,403.98	1,146,473.20
Alcorn								1,200.00					30,221.28	1,201,995.04		23,202.55		12,362.50	1,233,416.32
Amite																			213,448.86
Attala																			734,816.46
Benton																			88,693.63
Bolivar																			3,428.08
Bolivar																			1,222,694.89
Calhoun																			1,404,076.65
Carroll																			246,816.75
Chickasaw																			51,819.20
Choctaw																			123,940.18
Choctaw																			303,394.07
Claiborne																			0.00
Clarke																			225,811.57
Clay																			732,241.86
Coahoma																			759,438.35
Copiah																			499,622.92
Covington																			696,404.82
Covington																			4,835,732.28
DeSoto																			1,519,614.79
Forrest																			1,519,614.79
Franklin																			1,676,937.96
Franklin																			27,623.81
George																			646,323.65
Greene																			0.00
Grenada																			139,177.49
Hancock																			5,475,551.83
Harrison																			358,308.86
Harrison																			3,502,126.71
Hinds																			1,344,838.51
Holmes																			1,655,707.23
Humphreys																			55,640.08
Issaquena																			546,237.17
Itawamba																			423.24
Itawamba																			171,037.37
Jackson																			1,549,824.03
Jasper																			309,711.52
Jefferson																			101,016.33
Jeff Davis																			3,697.20
Jeff Davis																			286,113.68
Jones																			1,872,655.01
Kemper																			620,597.37
Kemper																			569,782.67
Lafayette																			386,454.59
Lafayette																			1,727,974.58
Lamar																			175,411.37
Lamar																			27,825.52
Lauderdale																			40,091.49
Lauderdale																			7,053.43
Lauderdale																			277,265.17

STATE AID PROGRAM CONSTRUCTION AND ENGINEERING DISBURSEMENTS BY COUNTY AND SYSTEM FROM JULY 1, 2007 THRU JUNE 30, 2008

COUNTY	RR CROSSING		MDOT HIGH PRIORITY MS System	HIGH RISK RURAL ROAD PROGRAM System	RURAL SECONDARY GRADE RSG/STPG System	ACCESS HIGHWAY LAKES AHL System		APPALACHIAN HIGHWAY APL System		PUBLIC LAND HIGHWAYS PLH System		DEFENSE ACCESS AGMC System	EMERGENCY RELIEF System	CONGESTION RELIEF System	LOCAL SYSTEM ROAD PROJECTS System	STATE AID PROJECTS SAP System	SURFACE TRANSPORTATION RURAL COUNTIES STP System		BRIDGE REPLACEMENT BR System		TOTALS BY COUNTY	
	01 & 02 System	System				34 System	36 System	62 System	64 System	66 System	68 System						80 System	81 System	82 & 46 System	85 System		
Lawrence			3,231,718.58													112,795.37					1,681.48	3,346,195.43
Leake																265,521.63					4,407.95	269,929.58
Lee								232,565.56								72,177.87		861,209.85			2,246,010.87	3,411,964.15
Leflore									248,359.00													248,359.00
Lincoln									37,228.99													
Lowndes																180,019.63		701,296.58			16,922.68	2,914,843.64
Madison																814,308.39		46,436.71			1,049,755.55	1,276,211.89
Marion																341,335.19					867,882.43	1,682,190.82
Marshall																1,034,582.98		639,280.32			47,181.17	388,516.36
Monroe																428,693.86					1,716.00	719,458.34
Montgomery									32,966.60							62,483.47					47,780.34	110,263.81
Neshoba									289,048.48							493,225.19		(8,198.57)			1,075.00	486,101.62
Newton																75,077.15					314,014.56	938,462.31
Noxubee																498,902.67					317,992.80	327,477.76
Okfuskeena									730,429.30							1,168,068.57					1,900,196.78	1,900,196.78
Panola																439,779.50		52,699.56			39,239.20	563,456.82
Pearl River																264,125.81		369,405.62			6,054.28	2,332,679.11
Perry																452,557.60					51,565.52	547,420.12
Pike																95,419.02		781,523.15			3,419.92	880,362.09
Pontotoc																342,567.90		12,976.39				355,544.29
Premitts																178,543.38		329,355.45			637,501.04	1,145,399.87
Quitman																1,166.07					773.18	1,939.25
Rankin																2,701,510.30						2,737,804.08
Scott																487,398.57					20,175.85	507,574.42
Sharkey																114,451.40						114,451.40
Simpson																34,693.81		15,257.00			15,328.46	820,714.02
Smith																107,593.51					106,254.78	1,437,752.13
Stone																676,481.97					1,106,708.63	2,717,373.57
Sunflower																208,390.83						208,390.83
Tallahatchie																1,517,554.76					1,149,332.90	3,021,895.71
Tate																719,055.58		469,562.78			287,719.89	1,874,198.01
Tippah																92,589.31					4,515.16	97,104.47
Tishomingo																75,910.95						75,910.95
Tunica																						0.00
Union																244,447.36						244,447.36
Walthall																18,613.45					58,186.07	76,799.52
Warren																24,853.93						508,386.91
Washington																17,115.02					297,857.29	297,857.29

STATE AID PROGRAM CONSTRUCTION AND ENGINEERING DISBURSEMENTS BY COUNTY AND SYSTEM FROM JULY 1, 2007 THRU JUNE 30, 2008

COUNTY	RR CROSSING RRS/STP-C & RR SIGNAL RRP/STP-S System 01 & 02	MDOT HIGH PRIORITY MS System 19	HIGH RISK RURAL ROAD PROGRAM System 25	RURAL SECONDARY GRADE RSG/STPG System 32	ACCESS HIGHWAY LAKES AHL System 34	APPALACHIAN ACCESS HIGHWAY APL System 36	PUBLIC LAND HIGHWAYS PLH System 62	DEFENSE ACCESS AGMC System 64	EMERGENCY RELIEF System 66	CONGESTION RELIEF System 68	LOCAL SYSTEM ROAD PROJECTS System 80	STATE AID PROJECTS SAP System 81	SURFACE		TOTALS BY COUNTY
													TRANSPORTATION RURAL COUNTIES STP System 82 & 46	BRIDGE REPLACEMENT BR System 85	
Wayne													9,285.75		9,285.75
Webster												351,820.16	1,626.15	65,451.40	418,897.71
Wilkinson											33,912.00	72,064.27	(1,320.00)	1,469,752.04	1,574,408.31
Winston							16,741.23					752,431.04		280,707.66	1,049,879.93
Yalobusha												330,927.46	230,185.97	130,889.99	692,003.42
Yazoo												283,158.44	47,079.56		1,005,147.84
Service Center *												18,741.82			18,741.82
Statewide **														1,529,658.27	1,529,658.27
TOTALS BY	2,243.70	10,361,904.99		50,467.93	0.00	1,370,481.21	285,587.99	49,067.00	3,431,273.50	0.00	1,392,068.46	36,075,718.22	14,720,024.77	15,647,454.69	85,213,661.10

* System 81, Testing Charges paid to Calvert on SAP 99 99 and to Burns & Cooley on SAP 99 100

** System 82, Wetland Mitigation, System 85, Bridge Inspection and Bridge Posting Projects

**LOCAL SYSTEM BRIDGE PROGRAM CONSTRUCTION AND ENGINEERING DISBURSEMENTS
BY COUNTY AND SYSTEM FROM JULY 1, 2007 THRU JUNE 30, 2008**

COUNTY	LOCAL SYSTEM ROAD PROJECTS	LOCAL SYSTEM BRIDGE PROJECTS	TOTALS BY COUNTY
	System 80	System 81	
Adams	13,816.05	300.00	14,116.05
Alcorn		175,168.93	175,168.93
Amite		690,721.46	690,721.46
Attala		273,913.60	273,913.60
Benton			0.00
Bolivar		499,180.52	499,180.52
Calhoun		165,478.55	165,478.55
Carroll		101,673.75	101,673.75
Chickasaw		10,468.27	10,468.27
Choctaw			0.00
Claiborne			0.00
Clarke		482,079.31	482,079.31
Clay		2,506.25	2,506.25
Coahoma			0.00
Copiah		228,852.33	228,852.33
Covington		24,095.84	24,095.84
DeSoto		57,637.70	57,637.70
Forrest		6,199.18	6,199.18
Franklin		3,219.64	3,219.64
George		18,634.40	18,634.40
Greene		11,707.91	11,707.91
Grenada			0.00
Hancock			0.00
Harrison			0.00
Hinds		1,145,606.39	1,145,606.39
Holmes		1,130.75	1,130.75
Humphreys		30,054.11	30,054.11
Issaquena			0.00
Itawamba		500,402.01	500,402.01
Jackson		66,565.55	66,565.55
Jasper		11,632.81	11,632.81
Jefferson		178,068.96	178,068.96
Jeff Davis		2,563.20	2,563.20
Jones		4,417.85	4,417.85
Kemper		540.74	540.74
Lafayette		331,113.26	331,113.26
Lamar		226,429.54	226,429.54
Lauderdale			0.00
Lawrence		125,153.58	125,153.58
Leake		350.00	350.00
Lee		123,359.41	123,359.41

**LOCAL SYSTEM BRIDGE PROGRAM CONSTRUCTION AND ENGINEERING DISBURSEMENTS
BY COUNTY AND SYSTEM FROM JULY 1, 2007 THRU JUNE 30, 2008**

COUNTY	LOCAL SYSTEM ROAD PROJECTS	LOCAL SYSTEM BRIDGE PROJECTS	TOTALS BY COUNTY
	System 80	System 81	
Leflore		9,054.55	9,054.55
Lincoln		1,125,798.23	1,125,798.23
Lowndes		217,447.46	217,447.46
Madison			0.00
Marion		22,030.67	22,030.67
Marshall		344,010.32	344,010.32
Monroe		9,665.69	9,665.69
Montgomery		438,260.16	438,260.16
Neshoba		10,783.64	10,783.64
Newton		33,440.44	33,440.44
Noxubee		117,456.57	117,456.57
Oktibbeha		410,867.27	410,867.27
Panola		429,127.57	429,127.57
Pearl River		31,886.90	31,886.90
Perry		2,965.15	2,965.15
Pike		587,240.41	587,240.41
Pontotoc		4,466.20	4,466.20
Prentiss		409,665.82	409,665.82
Quitman		181,473.22	181,473.22
Rankin	1,460,364.59		1,460,364.59
Scott			0.00
Sharkey		448,137.04	448,137.04
Simpson		13,668.12	13,668.12
Smith		20,469.92	20,469.92
Stone		3,513.72	3,513.72
Sunflower		48,480.04	48,480.04
Tallahatchie		48,156.60	48,156.60
Tate		349.75	349.75
Tippah		134,211.67	134,211.67
Tishomingo		175.00	175.00
Tunica			0.00
Union		243,581.75	243,581.75
Walthall		272,595.03	272,595.03
Warren		269,924.40	269,924.40
Washington		418,446.92	418,446.92
Wayne		267,852.58	267,852.58
Webster		18,657.65	18,657.65
Wilkinson		519,824.10	519,824.10
Winston		145,526.21	145,526.21
Yalabusha		70,791.55	70,791.55
Yazoo		51,600.32	51,600.32
TOTALS BY SYSTEM	1,474,180.64	12,880,828.44	14,355,009.08

This page intentionally left blank.